



# GPNet Communications Manual



A CMS Medicare  
Administrative Contractor

January 2012



# TABLE OF CONTENTS

<b>UNDERSTANDING GPNET</b>	<b>1</b>
Submissions .....	1
Acceptable Asynchronous Communications Packages .....	2
Who to Contact .....	2
<b>ASC X12 837 COMPLETION INFORMATION</b>	<b>3</b>
Version 4010A1 .....	3
Version 5010 .....	3
Payer ID Information .....	4
<b>USING GPNET ASYNCHRONOUS TRANSMISSION</b>	<b>5</b>
Log In and User Validation.....	5
Messages .....	5
Main Menu.....	5
Upload a File.....	6
Download a File.....	7
List Files In Mailbox.....	7
Example of INV message: .....	9
NDM Response Examples .....	10
Informational Message.....	10
997 Acknowledgement .....	10
Invalid File Header .....	10
Rejected ID .....	10
System Accessibility.....	10
<b>GPNET FILE TRANSFER PROTOCOL (FTP)</b>	<b>11</b>
FTP Instructions.....	11
Logging onto GPNet Using FTP.....	11
Uploading Files Using FTP .....	14
Downloading Files Using FTP .....	15
<b>NETWORK DATA MOVER (NDM) SPECIFICATIONS</b>	<b>16</b>
NDM Node Connection .....	16
Report Retrieval .....	16
837 Claims Submission Dataset Names .....	17
<b>ASC X12 v4010A1 RESPONSES</b>	<b>18</b>
GPNet Claim Acceptance Response in Report Format .....	18
GPNet Claim Acceptance Response in File Format .....	19
GPNet Edits .....	24
997 Acknowledgement .....	24
<b>ASC X12 V5010 RESPONSES</b>	<b>25</b>
TA1 .....	25
999.....	25
277CA.....	26
Accepted .....	27
Rejected .....	28

835.....28

**PLEASE NOTE:** The *GPNet Communications Manual* is subject to change as we receive additional information regarding the transition to HIPAA-ready electronic formats. We will post updated versions of this and other HIPAA-related documents on our Web site. Please visit our EDI Software & Manuals Web page at: [www.trailblazerhealth.com/Electronic Data Interchange/Software Manuals](http://www.trailblazerhealth.com/Electronic Data Interchange/Software Manuals)

## UNDERSTANDING GPNET

GPNet is the EDI gateway to TrailBlazer Health Enterprises®. The GPNet communication platform supports asynchronous telecommunications up to 56K bps. It will support numerous asynchronous telecommunication protocols, including Kermit, Xmodem (Check Sum), Ymodem (Batch), and Zmodem. Most off-the-shelf communication software will support one or all of these protocols. You may select any of the protocols indicated; however, **Zmodem is recommended** based on its speed and reliability. The asynchronous user's modem should be compatible with 56K, V.34 - 28.8 bps, V.42 - 14.4 bps.

In addition, we encourage the use of PKZIP compatible compression software. GPNet is defaulted to send uncompressed files; therefore, if you wish to receive all of your files in a compressed format, contact the Technology Support Center for maintenance to the database.

**Note:** GPNet also supports file transfers via File Transfer Protocol (FTP) and CONNECT:Direct, also known as Network Data Mover (NDM). Specifications on these options are included later in this manual.

### Submissions

GPNet currently supports versions 4010A1 and 5010A1/A2 of the ASC X12 837 claim submission. Copies of the v4010A1 Implementation Guides can be obtained through the Washington Publishing Company Web site at <http://www.wpc-edi.com>. ASC X12 TR3 Implementation Guides for v5010 transactions are available through [store.x12.org](http://store.x12.org).

The GPNet platform is available 24 hours a day, seven days a week, with the exception of infrequent maintenance performed on Sundays. The real time editing system is down from 11:30 p.m. to 5:00 a.m. EST. If the editing system is not available, you may still upload a file to GPNet. As soon as the editing system resumes processing, files in GPNet will be edited.

#### **ASC X12 v4010A1**

A 997 Acknowledgement will be returned to you upon completion of initial editing. Various claims processing system reports are provided electronically. Response files (page 18), which provide your GPNet edits, are available in either a file format or a report format. GPNet defaults to the report format.

#### **ASC X12 v5010**

A 999 Functional Acknowledgement will be returned to you upon completion of initial editing. Various claims processing system reports are provided electronically. Response files (page 25), which provide your GPNet edits, are available in either a file format or a report format. GPNet defaults to the report format.

If you wish to receive the response file in the file format, contact the Technology Support Center at 1-866-749-4302 for maintenance to the database.

#### **Files Submitted On or Before 8:00 PM EST**

Files submitted at or prior to 8:00 PM EST will be submitted to the respective standard system for same day processing.

#### **Files submitted after 8:00 PM EST**

Files submitted after 8:00 PM EST will be submitted to the appropriate standard system the next business day.

## Acceptable Asynchronous Communications Packages

The following asynchronous communication packages are currently successfully transmitting to GPNet:

- ◆ ProComm Plus (DOS)
- ◆ ProComm Plus (Windows)
- ◆ Crosstalk (Windows)
- ◆ QuickLink2 (Windows)
- ◆ PC Anywhere (DOS)
- ◆ PC Anywhere (Windows)
- ◆ Term
- ◆ Mlink
- ◆ HyperTerminal
- ◆ HyperACCESS

The settings you should verify are:

- ◆ Terminal emulation - VT100
- ◆ Parity - NONE
- ◆ Data Bits – 8
- ◆ Stop Bits - 1

For Zmodem, ensure that both sender and receiver crash recovery is “OFF” or set to “OVERWRITE.” When downloading a file, this setting will determine whether Zmodem overwrites an existing file of the same name. Since the response file name will be repeated, we recommend that the downloaded files be renamed or moved to another directory immediately to avoid losing or overwriting a file.

## Who to Contact

If you have any questions regarding the GPNet platform, please call the appropriate TrailBlazer® Technology Support Center at (866) 749-4302.

## ASC X12 837 COMPLETION INFORMATION

To ensure that your claim files are processed correctly, please include the following information in the appropriate fields:

### Version 4010A1

ASC X12 Field	
ISA06	Enter your <b>Submitter ID</b> .
ISA08	Enter the appropriate <b>Payer ID</b> (see Payer ID chart below).
ISA13	Please ensure the <b>nine-digit File ID</b> field is a <b>unique number</b> that has not been submitted within the past 12 months.
ISA15	Enter <b>T</b> when submitting a <b>test</b> claim file. Enter <b>P</b> when submitting a <b>production</b> claim file.
REF02	<b>Institutional Claims (Part A)</b> Enter 004010X096A1 when submitting a test or production claim file. <b>Professional Claims (Part B)</b> Enter 004010X098A1 when submitting a test or production claim file.
LIN03	The format for National Drug Codes (NDC) is 5-4-2 (11 positions with no dashes). Claims that contain NDC codes in any other format will be rejected.

### Version 5010

ASC X12 Field	Test Claim File	Production Claim File
ISA06 GS02	Enter your Submitter ID.	
ISA08 GS03 1000B / NM109 2010BB / NM109	Enter the appropriate Payer ID (see Payer ID chart below).	
ISA15	Enter <b>T</b> when submitting a test claim file.	Enter <b>P</b> when submitting a production claim file.
GS08	<b>Institutional Claims (Part A)</b> Enter <b>005010X223A2</b> when submitting a test claim file.  <b>Professional Claims (Part B)</b> Enter <b>005010X222A1</b> when submitting a test claim file.	

## Payer ID Information

Enter the appropriate Payer ID:

<b>Jurisdiction 4 A/B MAC</b>	<b>Payer ID</b>
Colorado Part A	04001
Colorado Part B	04102
New Mexico Part A	04001
New Mexico Part B	04202
Oklahoma Part A	04301
Oklahoma Part B	04302
Texas Part A	04001
Texas Part B	04402
J4901 Part A	04901



## Upload a File

To upload a file to GPNet:

1. Type **2** (or **U**) from the Main Menu and then press **ENTER**.
2. You will be prompted to select the file transfer protocol (Figure 3). Type the letter corresponding to your choice of modem protocol. (If you select **Q**, you will return to the Main Menu.) **Do not press ENTER after making your selection.**

```
>>>> UPLOAD A FILE <<<<
**** Select Protocol:
           K for Kermit
           X for XMODEM
           Y for YMODEM (BATCH)
           Z for ZMODEM
           or Q to QUIT
```

Figure 3 – Upload Protocol Selection Screen

3. Using your communication software procedures, send the file you wish to upload.
4. If the file transfer is successful, “Transfer COMPLETED SUCCESSFULLY” will display on the screen (Figure 4). If the file transfer fails, the message, “Transfer FAILED,” will display.

```
**** Please place your pc in ZMODEM mode to send the file.

**B0000400272214
**B0000400272214
**B0000400272214
**B0000400272214
**B0000400272214

**** Transfer COMPLETED SUCCESSFULLY ****
Press <Return> to continue
```

Figure 4 – Successful Transfer Message

5. Press **ENTER** to return to the Main Menu.
6. Upon successful transmission of a file, you may exit the system or wait for a response file.
  - a) To exit the system, press **5** (or **Q**) from the Main Menu and then press **ENTER**. You can dial back a few minutes later to download the response file.
  - b) For NDM submissions, to stay on the system and check for a response file, press **3** (or **L**) to go to the Mailbox and await the response file load. The time between a file upload and the response file availability will vary based on the file size and user volume. Although most responses are available within one hour, please allow 24 hours before contacting the Technology Support Center.  
For OPM submissions, the response will be available the next day if the file was received by 6:30 pm Eastern Time.  
When the response file is available (listed in your Mailbox), return to the Main Menu and proceed to the Download option.

## Download a File

To download a response or remittance file:

1. Type **1** (or **D**) from the Main Menu and press **ENTER**.
2. You will be prompted to choose a modem protocol (Figure 5).

```
>>>> DOWNLOAD A FILE <<<<

**** Select Protocol:

           K for Kermit
           X for XMODEM
           Y for YMODEM (BATCH)
           Z for ZMODEM

           or Q to QUIT
```

Figure 5 – Download Protocol Selection Screen

- a) If you select **Z** (Zmodem), **K** (Kermit), or **Y** (Ymodem), the system will ask if you wish to download all files in the mailbox. If you choose Yes (press **Y**), all available files will begin downloading. If you do not want to download all of the files, choose No (press **N**) and the system will display the list of available files.
  - b) If you select **X** (the Xmodem protocol), the file list will display immediately.
3. From the list of available files (Figure 6), enter the number associated with the desired file to commence the download and press **ENTER**. (See *List Files In Mailbox* below for information on deciphering the files listed in your mailbox.)

```
Do you wish to download all of the files in the mailbox? (Y/N)
Press Y/N to continue or q to quit
Your mailbox contains the following files
#  Filename                                     Type  Size   Date    Time    Ftype
=====
1.  RSP00001.RSP.REJECTED_ID                    f     116   Jun  26  14:30   Seq
2.  RSP00002.RSP.REJECTED_ID                    f     116   Jun  26  14:50   Seq
3.  RSP00003.RSP.INVALID_FILE_HDR              f      24   Jun  29  14:06   Seq

**** Please enter the number corresponding to your file choice or q to quit
**** and press <RETURN> to continue:
```

Figure 6 – Mailbox File List

If the file transfer is complete and successful, the “Transfer COMPLETED SUCCESSFULLY” message will be displayed on the screen and the file will be deleted from the mailbox. If the file transfer fails, the “Transfer FAILED” message will display. Files that have not been downloaded successfully will remain in the mailbox for 14 days before being purged.

## List Files In Mailbox

To check on files that you may have available to download from GPNet:

1. Choose List Files in Mailbox by pressing **3** (or **L**) from the Main Menu and press **ENTER**.
2. The system will prompt you to enter the name of the file you wish to see. You can type the full or a partial file name combined with an optional wildcard (\*). All files matching the search pattern will be displayed. You can also leave the file name field blank and just press **ENTER** to see a list of all the files in your mailbox. (Note: This same list also displays when you select the Xmodem Protocol from the Download option.)

3. If no matching files are found, the system will display the following message: “No files match your specified search pattern. Press RETURN to input new search pattern or q to quit.”. If there are more than 15 files to be listed, the system will pause and scroll the listing.

All files listed in your mailbox are presented in a similar format; the DOS-compliant, download file name followed by a file description. Examples are shown in the following table:

Mailbox Listing	DOS File Name	Description
RSPnnnnn.ZIP.CLAIM_RESPONSE	RSPnnnnn.ZIP	Claim Response File–Zipped ***
RSPnnnnn.RSP.CLAIM_RESPONSE	RSPnnnnn.RSP	Claim Response File
RSPnnnnn.RSP.INVALID_FILE_HDR	RSPnnnnn.RSP	Invalid File Header (see example)
INVnnnnn.RSP.INVALID_ZIP_FILE	INVnnnnn.RSP	Unable to Process This Zipped File
RSPnnnnn.RSP.REJECTED_ID	RSPnnnnn.RSP	Login ID and Submitter ID in file do not match. (see example)
ERNnnnnn.ERN.835_MA_Cxxxxx	ERNnnnnn.ERN	Medicare Part A 835 Electronic Remittance File
ERNnnnnn.ZIP.835_MA_Cxxxxx	ERNnnnnn.ZIP	Medicare Part A 835 Electronic Remittance File – Zipped ***
ERNnnnnn.ERN.835_MB_Cxxxxx	ERNnnnnn.ERN	Medicare Part B 835 Electronic Remittance File
ERNnnnnn.ZIP.835_MB_Cxxxxx	ERNnnnnn.ZIP	Medicare Part B 835 Electronic Remittance File – Zipped ***
997nnnnn.RSP	997nnnnn.RSP	997 Acknowledgement (see example)
MSGnnnnn.MSG.INFO_MESSAGE	MSGnnnnn.MSG	Message - Translation Error or other informational message (see example)
RPTnnnnn.RPT._xxxxx	RPTnnnnn.RPT	Report File
RPTnnnnn.ZIP.xxxxx	RPTnnnnn.ZIP	Report File – Zipped ***
BCLnnnnn.BCL.MCS_ACC_REJ-REPT	BCLnnnnn.BCL	J4 MCS Prepass Edits Report
BCLnnnnn.ZIP.MCS_ACC_REJ-REPT	BCLnnnnn.ZIP	J4 MCS Prepass Edits Report – Zipped ***
INVnnnnn.INV.Tmmdd		5010 Invalid test claim. See message example below.
INVnnnnn.INV.Pmmdd		5010 Invalid production claim. See message example below.
X12nnnnn.X12.Tmmdd.nnnnnnnnn		TA1 Interchange Acknowledgment Response for test claim (more information appears under 5010 Responses section)
X12nnnnn.X12.Pmmdd.nnnnnnnnn		TA1 Interchange Acknowledgment Response for production claim (more information appears under 5010 Responses section)
999nnnnn.RSP		999 Functional Acknowledgment Response, which replaces 997 in v5010. (more information appears under v5010 Responses section)

Mailbox Listing	DOS File Name	Description
RSPnnnnn.RSP.277CA	RSPnnnnn.RSP	277CA Claim Response File, which replaces the GPNet Response Report in v5010 (more information appears under 5010 Response section)
RSPnnnnn.ZIP.277CA	RSPnnnnn.ZIP.277CA	277CA Claim Response File–Zipped *** which replaces the GPNet Response Report in v5010 (more information appears under 5010 Response section)

nnnnn represents a sequential number.

xxxxx represents the payor report name.

The DOS extension “ZIP” will replace the three-character extension in the file name based on the ZIP flag in our control file.

nnnnnnnnn represents a unique file ID that is reported in ISA13.

**EXAMPLE OF INV MESSAGE:**

Interchange Control Number 407330100 for Receiver ID 00884 cannot be processed at this time due to the following error:

Not accepting 5010 transactions for Receiver ID 00884

## NDM Response Examples

### INFORMATIONAL MESSAGE

*(MSG00001.RSP.INFO\_MSG)*

---

When the file submitted is unable to be translated, you will receive the following response message:

```
WE ATTEMPTED TO TRANSLATE YOUR FILE BUT IT HAS FAILED. PLEASE  
CALL YOUR TECHNOLOGY SUPPORT CENTER FOR DETAILS.
```

### 997 ACKNOWLEDGEMENT

*(99700001.RSP.ANSI\_997)*

---

For information regarding 997 Acknowledgement response file layouts, please refer to the 997 section of your Implementation Guide for the transaction set being used.

### INVALID FILE HEADER

*(RSP00001.RSP.Invalid\_File\_HDR)*

---

The first three characters of the file must equal ISA or you will receive the following response:

```
INVALID_FILE_HDR=
```

### REJECTED ID

*(RSP00001.RSP.Invalid\_login)*

---

The GPNet Login ID used when logging into GPNet and Submitter ID included in the file must match or you will receive the following response:

```
SUBMITTER ID IN FILE DOES NOT MATCH THE LOGIN ID  
SUBMITTER_ID={ Snnnn1      }  
LOGIN_ID     = { Snnnn2      }
```

### SYSTEM ACCESSIBILITY

*(MSG00002.RSP.INFO\_MSG)*

---

The following message will display if you encounter a system problem while attempting to connect to GPNet:

```
TRYING A70ATEDInnnnn ADDRESS #1  
% CONNECTION REFUSED BYREMOTE HOST
```

Please redial until a connection to GPNet has been secured.

# GPNET FILE TRANSFER PROTOCOL (FTP)

## FTP Instructions

The File Transfer Protocol (FTP) currently offered by TrailBlazer is **not** an Internet connection. It is a direct dial up connection. All files must be transmitted in binary format—ASCII will not be processed. The default setting is ASCII; therefore, you must issue the “bin” command to change the format to binary. This change may be confirmed by issuing the “status” command and verifying that the change was accepted. Depending on your operating system, your windows may display differently than those noted in the following figures.

## Logging onto GPNet Using FTP

To submit files using the GPNet FTP, first you must make a connection and logon.

1. Create a Windows Dial-Up Networking session. Click on **Start, Settings, Network Connections, New Connection Wizard**. The **New Connection Wizard** (Figure 7) will walk you through setting up your FTP Connection.



Figure 7 – New Connection Wizard Welcome

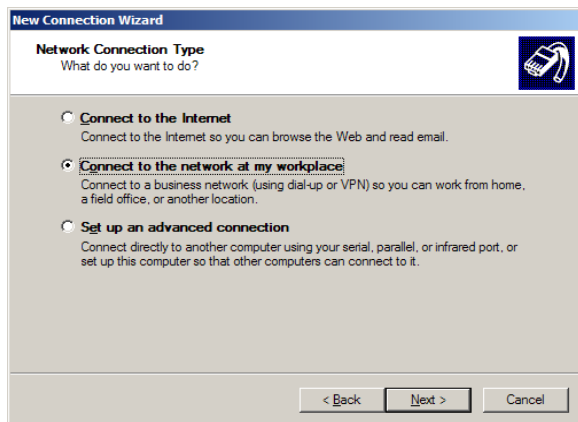


Figure 8 – Network Connection Type Window

2. Select **Connect to the network at my workplace** and click on **Next**. (Figure 8).

3. Indicate **Dial-up connection** and then click on **Next**. (Figure 9)

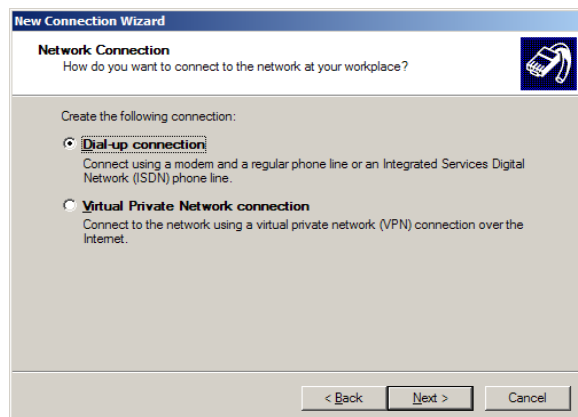


Figure 9 –Network Connection

4. Name the connection **GPNet** and then click on **Next**. (Figure 10)

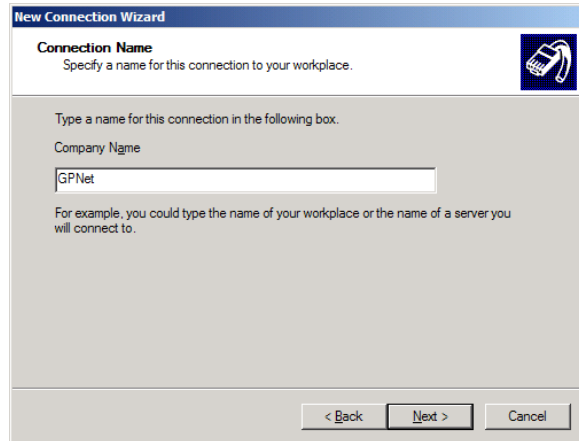


Figure 10 –Connection Name

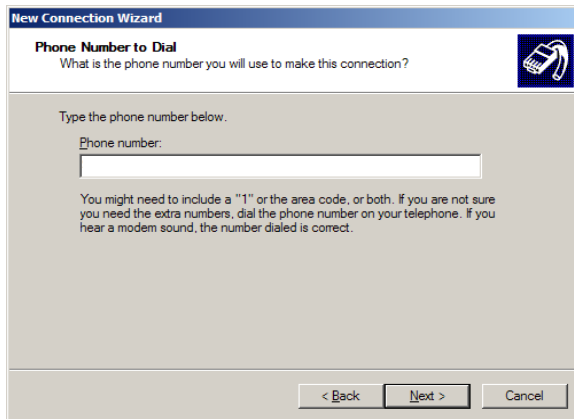


Figure 11 – Phone Number to Dial

5. Enter the **Phone Number to Dial** and then click on **Next** (Figure 11). Please contact the Technology Support Center at the appropriate telephone number listed on page 2 for the phone number to enter.

6. Make the appropriate Connection Availability choice and then click **Next** (Figure 12).

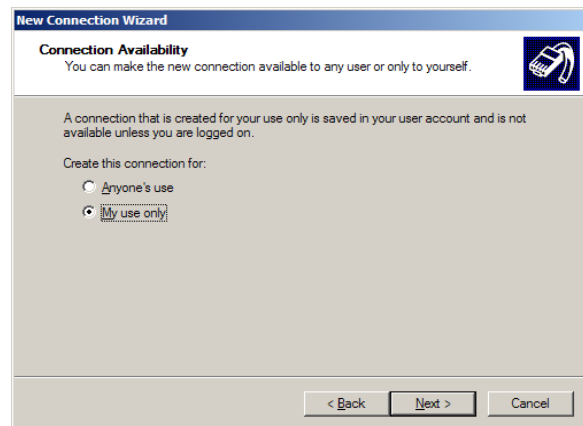


Figure 12 – Connection Availability

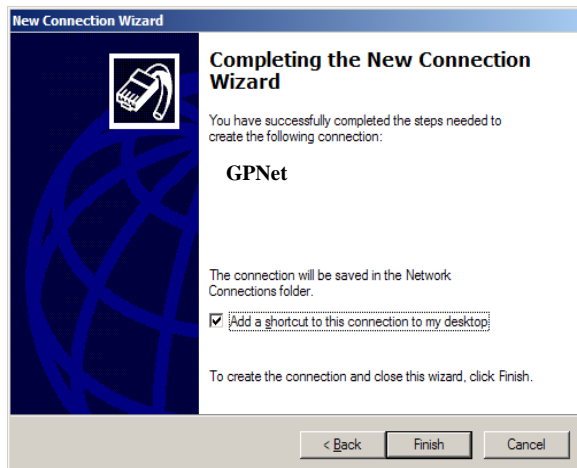


Figure 13 – Completing the New Connection Wizard

7. The final wizard window will display (Figure 13). Click **Finish** to save.

8. To open up the saved connection, go to **Start, Settings, Network Connections, GPNet**
9. The Connect GPNet window will open (Figure 14). Enter the FTP connection **User name** and **Password** (you received these with your Submitter ID and password). Note: The user name and password are case sensitive. Click **Dial**.

If you do not have an FTP user name and password, contact the Technology Support Center at the appropriate telephone number listed on page 2.

10. Your modem will dial. Once connected, the network connections icon will appear on your Windows taskbar.



Figure 14 – Connect GPNet Window

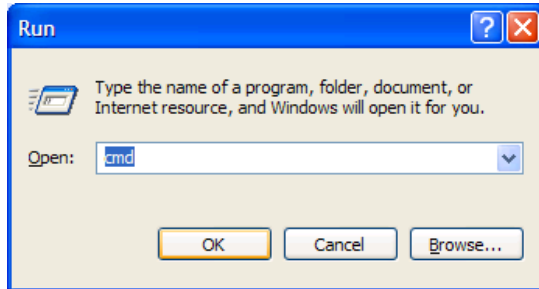


Figure 15 – Run Window

11. After the connection has been established, open a Command Prompt by going to **Start>Run** and typing **cmd**. Click on **OK** (Figure 15).

12. Type **ftp** at the prompt and press **ENTER**. At the ftp> prompt, type **open** and the **IP Address**. Press **ENTER**.
13. Type your user name at the **User nnnnnnnnnnnn:(none):** prompt and press **ENTER**. Type your password and press **ENTER**. (Figure 16)

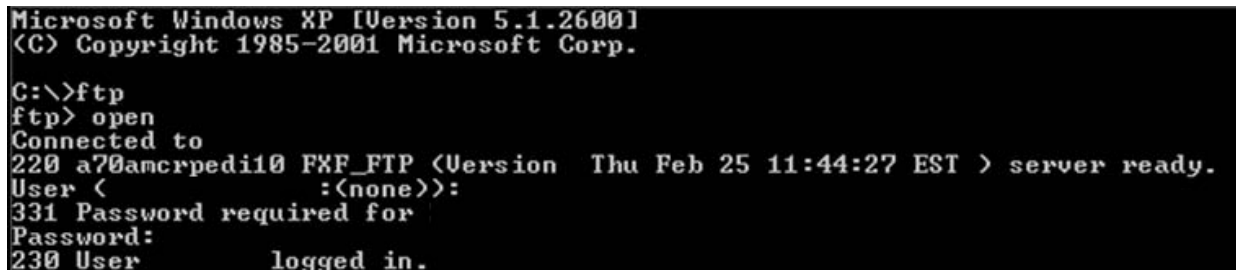


Figure 16 – MS-DOS Prompt Window with FTP Connection

## Uploading Files Using FTP

To upload a file after connecting:

1. At the ftp> prompt, type **ls** and press **ENTER** to list the directories. (Figure 17)

```
ftp> ls
200 PORT command successful.
150 Opening data connection for '/bin/ls'.

inbound
invalid
outbound
226 Transfer complete.
```

Figure 17 – MS-DOS Prompt Window with FTP Connection 2

2. At the prompt, type **cd inbound**, press **ENTER**, and then type **ls** and press **ENTER**.
3. Type **put**, your file name, and **CUSTOMER\_UPLD!FTP** and then press **ENTER**. (Figure 18)

```
ftp> cd inbound
250 CWD Command successful.
ftp> ls
200 PORT command successful.
550 File not found.
ftp> put <YOURFILENAME> CUSTOMER_UPLD!FTP_
```

Figure 18 – MS-DOS Prompt Window with FTP Connection 3

4. After the file has been successfully uploaded, you will receive a “Transfer Complete” message. (Figure 19)

```
200 PORT command successful.
150 Opening data connection for CUSTOMER_UPLD!FTP.
226 Transfer complete.
ftp: 1734 bytes sent in 0.00Seconds 1734000.00Kbytes/sec.
ftp>
```

Figure 19 – MS-DOS Prompt Window with FTP Connection 4

If you would like to retrieve your response immediately, go to the Download File instructions. Change the directory back to the base (type cd..).

To exit the FTP process, type **bye** and press **ENTER**.

To exit Command prompt, type **exit** at the prompt and press **ENTER**.

To end your modem connection, right click on the network signal on the Windows Taskbar and choose Disconnect. Click on **Disconnect**.

## Downloading Files Using FTP

To download a file after connecting to the FTP/FXF, begin by changing directories to the outbound mailbox and list the files available for download.

1. At the DOS ftp> prompt, type **cd outbound** and press **ENTER**.
2. Type **ls** and press **ENTER** to see a list of files available to download. (Figure 19)
3. After determining which file you want to download, type **get** and the file name. (Figure 20) Note: The file name you wish to retrieve must exactly match the file name in the outbound directory.

```
ftp> cd outbound
250 CWD Command successful.
ftp> ls
200 PORT command successful.
150 Opening data connection for '/bin/ls'.
RSP00016.RSP.REJECTED_ID
RSP00017.RSP.REJECTED_ID
226 Transfer complete.
ftp: 52 bytes received in 0.02Seconds 2.60Kbytes/sec.
ftp> get RSP00016.RSP.REJECTED_ID
200 PORT command successful.
150 Opening data connection for RSP00016.RSP.REJECTED_ID.
226 Transfer complete.
ftp: 119 bytes received in 0.03Seconds 3.97Kbytes/sec.
ftp>
```

Figure 20 – MS-DOS Prompt Window with FTP Connection 5

4. When the download is complete, you will get a “Transfer Complete” message.
5. To exit the FTP process, type **bye** and press **ENTER**.
6. To exit Command prompt, type **exit** at the prompt and press **ENTER**.
7. To end your modem connection, right click on the network signal on the Windows Taskbar and choose Disconnect. Click on **Disconnect**.

# NETWORK DATA MOVER (NDM) SPECIFICATIONS

**If you use NDM for claim submission,  
 please complete this page and return it to:  
 TrailBlazer Health Enterprises, LLC  
 P.O. Box 100249  
 Columbia, SC 29202-3249**

## NDM Node Connection

**The NDM Node connection is defined as follows:**

NET ID: \_\_\_\_\_ SCA \_\_\_\_\_  
 NODE ID: \_\_\_\_\_ A70NDM.MC \_\_\_\_\_  
 APPLID: \_\_\_\_\_ A70NDMMC \_\_\_\_\_  
 AT&T GNS ID: \_\_\_\_\_ PGBA \_\_\_\_\_

**Please enter your NDM information (required):**

NET ID: \_\_\_\_\_  
 NODE ID: \_\_\_\_\_  
 APPLID: \_\_\_\_\_  
 AT&T GNS ID: \_\_\_\_\_

**Your NDM User ID and password (if datasets are RACF protected):**

User ID: \_\_\_\_\_  
 Password: \_\_\_\_\_

## Report Retrieval

We will be returning our reports to you in the following Dataset Names (DSNs):

1. Edit/Transmission Reports (Professional and Institutional front-end reports go to same dataset)

Frequency: \_\_\_\_\_ Daily \_\_\_\_\_

**DSN:**

Responses	
Reports	
Remittances*	

\* Not applicable for OPM submissions.

**X12 Reports:** DCB=(DSORG=PS,LRECL=100,RECFM=FB,BLKSIZE=27900)

## 837 Claims Submission Dataset Names

LOB	Testing	Production
Part A	MAB.PROD.NDM.ECS.TCLMA.UBF.submitter (+1)	MAB.PROD.NDM.ECS.CLMA.UBF.submitter (+1)
Part B	MAB.PROD.NDM.ECS.TCLMA.NSF.submitter (+1)	MAB.PROD.NDM.ECS.CLMA.NSF.submitter (+1)

In the DSN noted above, **submitter** equals your Submitter ID.

DISP: (NEW,CATLG,DELETE)

UNIT: SYSDG

SPACE: (CYL,(75,10),RLSE)

DCB: (RECFM=FB,LRECL=80,BLKSIZE=27920)

## ASC X12 V4010A1 RESPONSES

All files submitted that generate an 997 Acknowledgement will receive a GPNet Claim Acceptance Response in either a report or file format. A Compliance report is generated when a claim is not syntactically correct. Claims noted with a REJECTED status should be resubmitted.

### GPNet Claim Acceptance Response in Report Format

The following is a sample Claim Acceptance Response. A legend for the footnotes can be found below.

Response Date: 2001/09/05 <sup>(1)</sup>	Response Type: INITIAL	Response Time: 07:43:42 <sup>(2)</sup>
SENDER: XXXXXX <sup>(3)</sup>	GPNET – TRAILBLAZER HEALTH ENT.	
PAYOR: nnnnn <sup>(4)</sup>	Texas – Medicare Part B	Format:ANSI <sup>(5)</sup>
<sup>(6)</sup> SUBMITTER ID: SSSSSSSSSS <sup>(A)</sup>	FILE ID: nnnnnn <sup>(B)</sup>	Status: REJECTED/PROD <sup>(C)</sup>
Total Claims: 97 <sup>(D)</sup>	Charges: \$11,415.07 <sup>(E)</sup>	
Claim Rejects: 97 <sup>(F)</sup>	Charges: \$11,415.07 <sup>(G)</sup>	
<sup>(H)</sup> I MSG-194 FILE - TOTAL-CHARGES	*SUM= 11,415.07 *TRAILER= 9,918.07	XXX <sup>(I)</sup>
<sup>(H)</sup> R MSG-190 FILE - OUT OF BALANCE		XXX <sup>(I)</sup>
<hr/>		
<sup>(7)</sup> PROVIDER ID: AAAA <sup>(A)</sup>	BATCH ID: nnnnnn <sup>(B)</sup> 0001 <sup>(J)</sup>	Status: REJECTED/PROD <sup>(C)</sup>
Total Claims: 87 <sup>(D)</sup>	Charges: \$9,760.07 <sup>(E)</sup>	
Claim Rejects: 87 <sup>(F)</sup>	Charges: \$9,760.07 <sup>(G)</sup>	
<sup>(H)</sup> I MSG-294 BATCH - TOTAL-CHARGE	*SUM= 9,760.07 *TRAILER= 9,918.07	XXX <sup>(I)</sup>
<sup>(H)</sup> R MSG-290 BATCH OUT OF BALANCE		XXX <sup>(I)</sup>
<hr/>		
<sup>(8)</sup> PATIENT: DOE JOHN <sup>(A)</sup>	PCN: nnnnnnnnnnnn <sup>(B)</sup>	Status: REJECTED <sup>(C)</sup>
INSURED: DOE <sup>(D)</sup> JOHN	ID: XXXnnnnnnnnnn <sup>(E)</sup>	
First DOS: 2001/08/23 <sup>(F)</sup>	Charges: \$0.00 <sup>(G)</sup>	
<sup>(I)</sup> R MSG-337 INVALID DATE (CCYYMMDD) IN FIELD= XXXXX		XXX <sup>(J)</sup>
<sup>(I)</sup> R MSG-337 INVALID DATE (CCYYMMDD) IN FIELD= XXXXX		XXX <sup>(J)</sup>
<sup>(I)</sup> R MSG-337 INVALID DATE (CCYYMMDD) IN FIELD= XXXXX		XXX <sup>(J)</sup>
<sup>(I)</sup> I MSG-394 CLM-TOT-CHARGE * SUM=0.00 * TRAILER= 158.00		XXX <sup>(J)</sup>
<sup>(I)</sup> R MSG-390 CLAIM OUT OF BALANCE		XXX <sup>(J)</sup>
<hr/>		
<sup>(8)</sup> PATIENT: SMITH MARY <sup>(A)</sup>	PCN: nnnnnnnnnnnn <sup>(B)</sup>	Status: REJECTED <sup>(C)</sup>
INSURED: SMITH MARY <sup>(D)</sup>	ID: XXXnnnnnnnnnn <sup>(E)</sup>	
First DOS: 2001/08/15 <sup>(F)</sup>	Charges: \$412.00 <sup>(G)</sup>	
<sup>(H)</sup> R MSG-673 PROC. REQUIRES REFERRING PROV. INFO ( 90762 - )		XXX (02) <sup>(I)</sup>
<hr/>		
<sup>(7)</sup> PROVIDER ID: BBBB <sup>(A)</sup>	BATCH ID: nnnnnn <sup>(B)</sup> 0002 <sup>(I)</sup>	Status: REJECTED/PROD <sup>(C)</sup>
Total Claims: 10 <sup>(D)</sup>	Charges: \$1655.00 <sup>(E)</sup>	
Claim Rejects: 0 <sup>(F)</sup>	Charges: \$0.00 <sup>(G)</sup>	

END OF REPORT

#### Legend

- (1) Processing/Acceptance date in CCYY/MM/DD format
- (2) Processing/Acceptance time in HH:MM:SS format
- (3) Identifies carrier/intermediary that is providing this response
- (4) Identifies receiver ID of claim file
- (5) Identifies format of claim file: This field will identify the format that your American National Standards Institute (ANSI) file has been translated to.

- (6) Submitter/File Information
  - (A) Submitter ID number (from ISA)
  - (B) File ID number
  - (C) File Status indicators: Accepted or Rejected/Prod or Test
  - (D) File – Total Claims submitted in the file
  - (E) File – Total Charges of claims submitted in the file
  - (F) File – Total Claims rejected
  - (G) File – Total Charges of rejected claims
  - (H) File level messages: W = Warning, R = Reject, I = Informational, and M = Message only
  - (I) Sequence number where error occurred
 

**Note:** To get net amount of accepted claims and charges, you must subtract 6-F from 6-D and subtract 6-G from 6-E.
- (7) Provider/Batch Information
  - (A) Provider ID number
  - (B) Batch ID number
  - (C) Batch Status indicators: Accepted or Rejected/Prod or Test
  - (D) Batch – Total Claims submitted in the batch
  - (E) Batch – Total Charges of claims submitted in the batch
  - (F) Batch – Total Claims Rejected
  - (G) Batch – Total Charges of Rejected Claims
  - (H) Batch level messages: W = Warning, R = Reject, I = Informational, and M = Message only
  - (I) Sequence number where error occurred
  - (J) Batch Sequence number
 

**Note:** To get net amount of accepted claims and charges, you must subtract 7-F from 7-D and subtract 7-G from 7-E.
- (8) Patient/Claim Information
  - (A) Patient last name, first name
  - (B) Patient Control Number
  - (C) Claim Status: Accepted or Rejected
  - (D) Insured last name, first name
  - (E) Patient Health Insurance/Certificate Number
  - (F) Date of Service on the claim (not necessarily the first DOS)
  - (G) Claim – Total charges
  - (H) Claim level messages: W = Warning, R = Reject, I = Informational, and M = Message only
  - (I) Sequence number where error occurred

## GPNet Claim Acceptance Response in File Format

```

*****
* DD=ECSR...      DSN=MABV.PROD.ECS.YDRS...      VSAM-ESDS
*****
* 5/07/97      EMC RESPONSE FILE RECORD      MAX LENGTH=200
*****
* NOTE - WHEN THIS COPY MEMBER (ECSCRSP) CHANGES, THEN COPY
*       MEMBER ECSCRSPR MUST BE UPDATED ALSO.
* TO UPDATE ECSCRSPR, DO THE FOLLOWING:
* 1. COPY THIS MEMBER INTO ECSCRSPR.
* 2. ENTER THE FOLLOWING TSO COMMAND:
*    > C -RECORD. '-RECORD REDEFINES RSP-RECORD.' ALL
* 3. FIX THE FIRST 01 LEVEL TO STATE '01 RSP-RECORD.'
*****
01 RSP-RECORD.

05 RSP-RECORD-TYPE      PIC X(02).
88 RSP-TYPE-A0          VALUE 'A0'.
    
```

88	RSP-TYPE-AM	VALUE 'AM'.
88	RSP-TYPE-B0	VALUE 'B0'.
88	RSP-TYPE-BM	VALUE 'BM'.
88	RSP-TYPE-C0	VALUE 'C0'.
88	RSP-TYPE-CM	VALUE 'CM'.
05	FILLER	PIC X(198).
*****		
* CLEARINGHOUSE HEADER - SENDOR/PAYOR/SUBMITTER/FILE LENGTH=100		
*****		
01	RSP-A0-RECORD.	
05	RSP-A0-RECORD-TYPE	PIC X(02).
88	RSP-A0-TYPE	VALUE 'A0'.
05	RSP-A1-SUBM-ID	PIC X(12).
05	RSP-A1-SUBM-FILE-ID	PIC X(06).
05	RSP-A0-SENDOR.	
10	RSP-A0-SENDOR-TYPE	PIC X(01).
88	RSP-A0-SENDOR-C-MEDICARE	VALUE 'C'.
88	RSP-A0-SENDOR-D-MEDICAID	VALUE 'D'.
88	RSP-A0-SENDOR-F-COMMERCIAL	VALUE 'F'.
88	RSP-A0-SENDOR-G-BCBS	VALUE 'G'.
88	RSP-A0-SENDOR-H-CHAMPUS	VALUE 'H'.
88	RSP-A0-SENDOR-X-RECEIVER	VALUE 'X'.
10	RSP-A0-SENDOR-ID	PIC X(09).
05	RSP-A0-PAYOR.	
10	RSP-A0-PAYOR-TYPE	PIC X(01).
88	RSP-A0-PAYOR-C-MEDICARE	VALUE 'C'.
88	RSP-A0-PAYOR-D-MEDICAID	VALUE 'D'.
88	RSP-A0-PAYOR-F-COMMERCIAL	VALUE 'F'.
88	RSP-A0-PAYOR-G-BCBS	VALUE 'G'.
88	RSP-A0-PAYOR-H-CHAMPUS	VALUE 'H'.
10	RSP-A0-PAYOR-ID	PIC X(09).
05	RSP-A0-RESP-DATE	PIC X(08).
05	RSP-A0-RESP-TIME	PIC X(08).
05	RSP-A1-FILE-STATUS	PIC X(01).
88	RSP-A1-FILE-STATUS-ACCEPT	VALUE 'A'.
88	RSP-A1-FILE-STATUS-REJECT	VALUE 'R'.
88	RSP-A1-FILE-STATUS-NONE	VALUE ' '.
05	RSP-A1-FILE-TEST-IND	PIC X(01).
88	RSP-A1-FILE-TEST-IND-PROD	VALUE 'P'.
88	RSP-A1-FILE-TEST-IND-TEST	VALUE 'T'.
05	RSP-A1-FILE-TOTAL-CLAIMS	PIC 9(07).
05	RSP-A1-FILE-TOTAL-CHARGES	PIC 9(09)V99.
05	RSP-A1-FILE-REJECT-CLAIMS	PIC 9(07).
05	RSP-A1-FILE-REJECT-CHARGES	PIC 9(09)V99.
05	RSP-A1-FILE-FORMAT	PIC X(01).
88	RSP-A1-FILE-FORMAT-NSF	VALUE 'N'.
88	RSP-A1-FILE-FORMAT-UB92	VALUE 'U'.
88	RSP-A1-FILE-FORMAT-ANSI	VALUE 'A'.
88	RSP-A1-FILE-FORMAT-RAPS	VALUE 'R'.

```

05 RSP-A0-FILLER PIC X(05).

*****
* HEADER MESSAGE RECORD LENGTH=100
* (OPTIONAL) MULTIPLE PER FILE
*****
01 RSP-AM-MSG-RECORD.

05 RSP-AM-RECORD-TYPE PIC X(02).
88 RSP-AM-TYPE VALUE 'AM'.

05 RSP-AM-MSG-ID PIC X(07).
05 RSP-AM-MSG-TEXT PIC X(76).

05 RSP-AM-MSG-ACTION PIC X(01).
88 RSP-AM-MSG-ACTION-INFO-ONLY VALUE 'I'.
88 RSP-AM-MSG-ACTION-WARNING VALUE 'W'.
88 RSP-AM-MSG-ACTION-REJECT VALUE 'R'.

05 RSP-AM-FILLER1 PIC X(01).

05 RSP-AM-MSG-RECORD-ID PIC X(03).
05 RSP-AM-MSG-FIELD-ID PIC X(02).

05 RSP-AM-FILLER2 PIC X(08).

*****
* CLEARINGHOUSE - BATCH/PROVIDER RECORD LENGTH=100
*****
01 RSP-B0-PROV-RECORD.

05 RSP-B0-RECORD-TYPE PIC X(02).
88 RSP-B0-TYPE VALUE 'B0'.

05 RSP-B0-PROV-ID PIC X(15).
05 RSP-B0-PROV-BATCH-ID PIC X(06).

05 RSP-B0-BATCH-STATUS PIC X(01).
88 RSP-B0-BATCH-STATUS-ACCEPT VALUE 'A'.
88 RSP-B0-BATCH-STATUS-REJECT VALUE 'R'.
88 RSP-B0-BATCH-STATUS-NONE VALUE ' '.

05 RSP-B0-PROV-TEST-IND PIC X(01).
88 RSP-B0-PROV-TEST-IND-PROD VALUE 'P'.
88 RSP-B0-PROV-TEST-IND-TEST VALUE 'T'.

05 RSP-B0-BATCH-TOTAL-CLAIMS PIC 9(07).
05 RSP-B0-BATCH-TOTAL-CHARGES PIC 9(09)V99.

05 RSP-B0-BATCH-REJECT-CLAIMS PIC 9(07).
05 RSP-B0-BATCH-REJECT-CHARGES PIC 9(09)V99.

05 RSP-B0-FILLER1 PIC X(04).
05 RSP-B0-SUBM-ECHO-ID PIC X(16).
05 RSP-B0-CNTL-DATE PIC X(08).

05 RSP-B0-FILLER2 PIC X(07).
05 RSP-B0-PROV-BATCH-NO PIC X(04).

*****
* BATCH MESSAGE RECORD LENGTH=100
* (OPTIONAL) MULTIPLE PER BATCH

```

```

*****
01 RSP-BM-MSG-RECORD.

    05 RSP-BM-RECORD-TYPE          PIC X(02).
      88 RSP-BM-TYPE                VALUE 'BM'.

    05 RSP-BM-MSG-ID              PIC X(07).
    05 RSP-BM-MSG-TEXT            PIC X(76).

    05 RSP-BM-MSG-ACTION          PIC X(01).
      88 RSP-BM-MSG-ACTION-INFO-ONLY VALUE 'I'.
      88 RSP-BM-MSG-ACTION-WARNING  VALUE 'W'.
      88 RSP-BM-MSG-ACTION-REJECT   VALUE 'R'.

    05 RSP-BM-FILLER1             PIC X(01).

    05 RSP-BM-MSG-RECORD-ID       PIC X(03).
    05 RSP-BM-MSG-FIELD-ID        PIC X(02).

    05 RSP-BM-FILLER2             PIC X(08).

*****
* CLAIM/PATIENT/INSURED          LENGTH=200
*****
01 RSP-C0-INS-RECORD.

    05 RSP-C0-RECORD-TYPE          PIC X(02).
      88 RSP-C0-TYPE                VALUE 'C0'.

    05 RSP-C0-INS-ID              PIC X(25).
    05 RSP-C0-INS-NAME-LAST        PIC X(20).
    05 RSP-C0-INS-NAME-FIRST       PIC X(12).
    05 RSP-C0-INS-PAYOR-CLAIM-ID   PIC X(27).

    05 RSP-C1-CLM-PATIENT-CTL-NO   PIC X(17).
    05 RSP-C1-CLM-NAME-LAST        PIC X(20).
    05 RSP-C1-CLM-NAME-FIRST       PIC X(12).
    05 RSP-C1-CLM-FIRST-DATE-SERV  PIC X(08).
    05 RSP-C1-CLM-TOTAL-CHARGES    PIC 9(07)V99.

    05 RSP-C0-CLM-STATUS           PIC X(01).
      88 RSP-C0-CLM-STATUS-ACCEPT   VALUE 'A'.
      88 RSP-C0-CLM-STATUS-REJECT   VALUE 'R'.
      88 RSP-C0-CLM-STATUS-MESSAGE  VALUE ' '.

    05 RSP-C1-CLM-COLL-FILE-RBA    PIC 9(11).

    05 RSP-C1-CLM-HDR              PIC X(01).
      88 RSP-C1-CLM-HDR-ONLY        VALUE 'H'.
      88 RSP-C1-CLM-HDR-WITH-MSG    VALUE ' '.

    05 RSP-C0-INS-PAYOR.
      10 RSP-C0-INS-PAYOR-TYPE      PIC X(01).
      10 RSP-C0-INS-PAYOR-ID        PIC X(11).

NEW    05 RSP-C1-CLM-CLAIM-ID       PIC X(12).

    05 RSP-C0-FILLER               PIC X(11).

*****
* CLAIM MESSAGE RECORD          LENGTH=100
*                               (OPTIONAL) MULTIPLE PER CLAIM

```

```

*****
01 RSP-CM-MSG-RECORD.

    05 RSP-CM-RECORD-TYPE          PIC X(02).
    88 RSP-CM-TYPE                  VALUE 'CM'.

    05 RSP-CM-MSG-ID                PIC X(07).
    05 FILLER REDEFINES RSP-CM-MSG-ID.
    10 FILLER                        PIC X(04).
    10 RSP-CM-MSG-ID-POS5           PIC X(01).
    88 RSP-CM-MSG-FLAT-CD          VALUE 'H' 'I' 'J' 'K' 'L'
                                   'V'.
    10 FILLER                        PIC X(02).
    05 RSP-CM-MSG-TEXT              PIC X(76).

    05 RSP-CM-MSG-ACTION            PIC X(01).
    88 RSP-CM-MSG-ACTION-INFO-ONLY VALUE 'I'.
    88 RSP-CM-MSG-ACTION-WARNING   VALUE 'W'.
    88 RSP-CM-MSG-ACTION-REJECT    VALUE 'R'.

    05 RSP-CM-FILLER1               PIC X(01).

    05 RSP-CM-MSG-RECORD-ID         PIC X(03).
    05 RSP-CM-MSG-FIELD-ID          PIC X(02).
    05 RSP-CM-MSG-RECORD-SEQ        PIC X(02).

    05 RSP-CM-FILLER2               PIC X(06).
    
```

Flat File	Report
<b>Resp-A0-Record-Type</b>	<b>A0</b>
Date	Response Date
Time	Response Time
Sender-Type	1st Position of Sender
Sender-ID	Pos 2 thru 13 of Sender
Sender-Name	Sender Name
Payor-Type	1st Position of Payor
Payor-ID	Pos 2-13 of Payor
Payor-Name	Payor Name
Version	'00001'
<b>Resp-A1-Record-Type</b>	<b>A1</b>
Subm-ID	Submitter ID
Subm-File-ID	File ID
File-Status	(A, R or blank) Status (First Part)
File-Test-Ind	Status (Second Part)
File-Total-Claims	Subm Total Claims
File-Total-Charges	Subm Total Charges
File-Reject-Claims	Subm Claim Rejects
File-Reject-Charges	Subm Reject Charges
File-Format	Format - 'U' If Institutional, 'N' If Professional
<b>Resp-B0-Record-Type</b>	<b>B0</b>
Prov-ID	Provider ID
Prov-Batch-ID	Batch ID (First Part)
Batch-Status	Status (First Part)
Batch-Total-Claims	Prov Total Claims
Batch-Total-Charges	Prov Total Charges
Batch-Total-Reject-Claims	Prov Claim Rejects
Batch-Reject-Charges	Prov Reject Charges
Prov-Batch-No	Batch ID (Second Part)

Flat File	Report
<b>Resp-C0-Record-Type</b>	<b>C0</b>
Ins-ID	Insured ID
Ins-Name-Last	Insured (First Part)
Ins-Name-First	Insured (Second Part)
Ins-Payor-Claim-ID	Not Used
Ins-Payor-Type	Not Used
Ins-Payor-ID	Payor
<b>Resp-C1-Record-Type</b>	<b>C1</b>
Clm-Patient-Ctl-No	PCN
Clm-Name-Last	Patient (First Part)
Clm-Name-First	Patient (Last Part)
Clm-First-Date-Serv	First DOS
Clm-Total-Charges	Charges
Clm-Status (A, R or blank)	Status
Clm-Claim-ID	Not Used

## GPNet Edits

A listing of GPNet Edits will be posted to the TrailBlazer website. To check for updates, please visit the EDI Software & Manuals Web page at: [www.trailblazerhealth.com/Electronic Data Interchange/Software Manuals](http://www.trailblazerhealth.com/Electronic Data Interchange/Software Manuals).

## 997 Acknowledgement

A 997 report will be loaded into the submitter’s mailbox. This report informs the submitter whether or not the file is syntactically correct (syntactically passed the translator). Please note that this report is not a claims acceptance report. The AK5 segment (***bold and italicized in the figure below***) indicates an “A” for accepted or an “R” for rejected. If an “A” is received, a GPNet Edit Report (rEDI-link) will be generated.

A sample of the 997 report, named **997nnnnn.RSP**, is shown in Figure 17.

```

ISA*00*          *00*          *27*C00nnn          *27*S99999
*030507*0733*U*00401*000021875*0*T*>~GS*FA*C00nnn*S99999*20030507*073334*11163*X
*004010X098~ST*997*11163001~AK1*HC5093001~AK2*837*000000001~AK5*A~AK9*A*1*1*1~SE
*6*11163001~GE*1*11163~IEA*1*000021875~
    
```

Figure 17 – Sample 997 Report

## ASC X12 V5010 RESPONSES

Below is a list of the ASC X12 v5010 transactions and version numbers:

ASC X12 Transaction	Description	Base Version	Errata Version
270/271	Health Care Eligibility Benefit Inquiry and Response	005010X279	005010X279A1
837P	Health Care Claim: Professional	005010X222	005010X222A1
837I	Health Care Claim: Institutional	005010X223	005010X223A2
999	Implementation Acknowledgment For Health Care Insurance	005010X231	005010X231A1
835	Health Care Claim Payment/Advice	005010X221	005010X221A1
276/277	Status Inquiry and Response	005010X212	N/A
277CA	Claim Acknowledgement	005010X214	N/A

The current X12 v4010A1 electronic claims GPNNet Response Report and 997 (Acknowledgement), distributed by TrailBlazer, will be replaced with the 999 (Functional Acknowledgement) and 277CA (Claims Acknowledgement) once an electronic submitter begins using the new X12 v5010 format. The 999 and 27 CA may not be readable without translation software. While these transactions are not HIPAA-mandated, the Centers for Medicare & Medicaid Services (CMS) require these transactions for all Medicare business. The TA1 Interchange Acknowledgement report will be produced for X12 v5010 transactions only when the interchange is rejected. The report will also not be readable without translation software. It is important for providers to ensure their software will be able to accommodate these new files.

### TA1

The TA1 Interchange Acknowledgement report will be produced for X12 v5010 transactions only when the interchange is rejected. The report will also not be readable without translation software. When a TA1 is received, you will need to correct and resubmit the entire ISA-IEA Interchange. Note: The TA1 will only be produced if the interchange is rejected.

```
ISA*00*          *00*          *27*PPPPP          *27*XXXXXX          *110308*1146**^00501*000001612*0*T*:~
TA1*000001612*110308*1036*R*024~
IEA*0*000001612~
```

### 999

When a 999 is received, you may: (1) recognize errors occurred and begin a correct/resubmit action, or (2) recognize that all transactions were accepted. A 999 reflects technical problems that must be addressed by the software preparing the EDI transmission. NOTE: “Trouble tickets” will likely be addressed by technical resources to identify correction needed before resubmission.

```
ISA*00*      *00*      *27*PPPPPP  *27*XXXXXX   *100914*1025*^*00501*000000218*0*T::~~
GS*FA*PPPPPP*XXXXXX*20100914*10251463*3*X*005010X231A1~
ST*999*3001*005010X231A1~
AK1*HC*2145001*005010X222A1~
AK2*837*000000001*005010X222A1~
IK5*A~
AK9*A*1*1*1~
SE*5*3001~
GE*1*3~
IEA*1*000000218~
```

## 277CA

A 277CA will be generated with a successful 999. If you receive a rejected 999, a 277CA will not be generated.

When a 277CA is received, (1) recognize errors that occurred and begin a correct/resubmit action on specific claims, (2) recognize transactions were accepted and (3) use returned claim numbers for future status inquiries. A 277CA reflects a data problem that must be addressed by resources in the provider's billing area. Your billing staff will likely need reports to be produced in order to identify claim corrections before resubmission.

**ACCEPTED**

ISA\*00\* \*00\* \*28\*PPPPP \*28\*XXXXXX \*100915\*1002^\*00501\*091536298\*0\*T\*::~~  
GS\*HN\*PPPPP\*0\*20100915\*100208\*26\*X\*005010X214~  
ST\*277\*000000001\*005010X214~  
BHT\*0085\*08\*091536332\*20100915\*09153600\*TH~  
HL\*1\*\*20\*1~  
NM1\*PR\*2\*CARRIER NAME\*\*\*\*\*PI\*PPPPP~  
TRN\*1\*PPPPP20100915000003~  
DTP\*050\*D8\*20100915~  
DTP\*009\*D8\*20100915~  
HL\*2\*1\*21\*1~  
NM1\*41\*2\*TEST SUBMITTER\*\*\*\*\*46\*XXXXXX~  
TRN\*2\*000008~  
STC\*A1:19:PR\*20100915\*WQ\*4500~  
QTY\*90\*1~  
AMT\*YU\*4500~  
HL\*3\*2\*19\*1~  
NM1\*85\*2\*PROVIDER NAME\*\*\*\*\*XX\*1234567890~  
TRN\*1\*IA92330H1..0001~  
STC\*A1:19:PR\*\*WQ\*4500~  
QTY\*QA\*1~  
AMT\*YU\*4500~  
HL\*4\*3\*PT~  
NM1\*QC\*1\*TEST\*\*PART\*\*A\*MI\*11111111F~  
TRN\*2\*IA92330H1..0001~  
STC\*A2:20:PR\*20100915\*WQ\*4500~  
REF\*1K\*21025800000107TST~  
REF\*BLT\*131~  
DTP\*472\*RD8\*20090701-20090701~  
SE\*27\*000000001~  
GE\*1\*26~  
IEA\*1\*091536298~

**REJECTED**

```

ISA*00*      *00*      *ZZ*PPPPP      *ZZ*XXXXX      *100907*1219*^*00501*000000001*0*P*::~~
GS*HN*PPPPP*0*20100907*121959*12*X*005010X214~
ST*277*000000001*005010X214~
BHT*0085*08*10250*20100907*11360400*TH~
HL*1**20*1~
NM1*PR*2*CARRIER NAME*****46*PPPPP~
TRN*1*PPPPP201009070000001~
DTP*050*D8*20100903~
DTP*009*D8*20100907~
HL*2*1*21*1~
NM1*41*2*SUBMITTER NAME*****46*XXXXX~
TRN*2*PA92430XX.SVD03-4~
STC*A1:19:PR*20100907*WQ*50~
QTY*AA*1~
AMT*YY*50~
HL*3*2*19*0~
NM1*85*2*PROVIDER NAME*****XX*1234567890~
TRN*1*0~
STC*A7:500:85**U*50~
STC*A8:562:85**U*50*****A8:128:85~
STC*A7:562:85**U*50~
STC*A8:496:85**U*50~
QTY*QC*1~
AMT*YY*50~
SE*2323*000000001~
GE*1*12~
IEA*1*000000001~

```

**835**

The Centers for Medicare & Medicaid Services (CMS) has begun the implementation process to convert from ASC X12 version 4010A1 to version 5010 errata. This conversion process will impact the Health Care Claim Payment/Advice 835 electronic remittance transaction. Notable changes between these versions include:

- Requirement refinement: stronger definitions and usage rules

- Enhanced content to promote clarity: front matter sections have been updated to provide better direction
- Changes to descriptions, usage, length and repeats
- Standardized use of PLB reason codes, Claim Adjustment Reason Codes and Remittance Advice Remark Codes: may provide increased automation as well as cost reduction as a result of eliminating phone calls and correspondence

Loop	Segment (Identifier/Qualifier) Element	Description
Various	N4 07	Country Subdivision Code ID
1000A	PER (BL)	Payer Technical Contact Information
1000A	PER (IC)	Payer Web Site
1000B	RDM	Remittance Delivery Method (Not Used by Medicare)
2100	CLP 14	Yes/No Condition or Response Code (Not Used)
2100	CAS 07 – 13	Claim Adjustment Group Code, Reason Code, Amount, and Quantity Repeats
2100	NM1 (QC) 12 NM1 (74) 12 NM1 (82) 12 NM1 (TT) 12 NM1 (PR) 12	Name Last or Organization Name (Not Used)
2100	NM1 (GB)	Other Subscriber Name
2100	DTM (232 or 233) 01 - 02	Statement From or To Date
2100	DTM (036) 01 – 02	Coverage Expiration Date
2100	DTM (050) 01 – 02	Claim Received Date
2110	SVC 01-8 SVC 06-8	Product Service ID (Not Used)
2110	REF (6R) 01 – 02	Line Item Control Number
2110	REF (0K) 01 – 02	Health Care Policy Identification

The following are examples of an electronic remittance transaction in version 5010 Base. These examples are subject to change and are not inclusive. Your data will differ.

**Example 1 – Showing Payment**

```

ST*835*000000001~
BPR*I*297.66*C*ACH*CCP*01*111000012*DA*00000001234567894*1123456789**01*062001319
*DA*8765431190*20090901~
TRN*1*888881234*1112345678~
REF*EV*SSSSSS~
DTM*405*20090828~
N1*PR*MEDICARE PART B~
N3*1234 ANY STREET~
N4*ANYTOWN*SC*292011234~
REF*2U*PPPPP~
PER*CX*MEDICARE PART B*TE*8665551212~
PER*BL*PROVIDER SUPPORT*TE*8665551212*TE*8665551212*FX*8035551212~
N1*PE*PHYSICIANS LTD*XX*11111111~
N3*ONE MAIN STREET~
    
```

N4\*ANYTOWN\*SC\*292011234~  
 REF\*TJ\*1123456789~  
 LX\*1~  
 CLP\*A9800078\*19\*2000\*297.66\*74.41\*MB\*2209229100360\*11\*1~  
 NM1\*QC\*1\*SAMPLE\*PATIENT\*G\*\*\*HN\*11111111F~  
 NM1\*74\*1\*\*PATIENCE~  
 NM1\*TT\*2\*CROSSOVER COMPANY\*\*\*\*\*PI\*11111~  
 MOA\*\*\*MA01\*MA18~  
 REF\*EA\*797828~  
 DTM\*050\*20090817~  
 SVC\*HC:72141\*2000\*297.66\*\*1~  
 DTM\*472\*20090815~  
 CAS\*CO\*45\*1627.93~  
 CAS\*PR\*2\*74.41~  
 REF\*LU\*11~  
 REF\*6R\*20793~  
 AMT\*B6\*372.07~  
 SE\*31\*000000001~

### Example 2 – Showing no payment

ST\*835\*000000006~  
 BPR\*H\*0\*C\*NON\*\*\*\*\*20090901~  
 TRN\*1\*300000973\*1112345678~  
 REF\*EV\*SSSSSS~  
 DTM\*405\*20090828~  
 N1\*PR\*MEDICARE PART B~  
 N3\*1234 ANYSTREET~  
 N4\*ANYTOWN\*SC\*292011234~  
 REF\*2U\*PPPPP~  
 PER\*CX\*MEDICARE PART B\*TE\*8665551212~  
 PER\*BL\*PROVIDER SUPPORT\*TE\*8665551212\*TE\*8665551212\*FX\*8035551212~  
 PER\*IC\*\*UR\*WWW.TRAILBLAZERHEALTH.COM~  
 N1\*PE\*JOHN SMITH MD\*XX\*11111111~  
 N3\*TWO ANYSTREET ~  
 N4\*ANYTOWN\*SC\*292011234~  
 REF\*TJ\*1123456789~  
 LX\*0~  
 CLP\*0\*1\*2500\*0\*0\*MB\*2709181280010\*22~  
 NM1\*QC\*1\*SAMPLE\*PATIENCE\*\*\*HN\*11111111F~  
 NM1\*74\*1\*\*\*M~  
 MOA\*\*\*MA28~  
 DTM\*050\*20090630~  
 SVC\*HC:66984:RT\*2500\*0\*0~  
 DTM\*472\*20090222~  
 CAS\*CO\*50\*2500~  
 REF\*LU\*22~  
 REF\*6R\*01~  
 REF\*0K\*L26793~  
 LQ\*HE\*M26~  
 LQ\*HE\*N115~  
 SE\*89\*000000006~